

# Local/State

Docking Thinks  
Treatment Helped. 15D.

Editorials 2-3  
Sports 6-13  
Classified Ads 15-21  
Comics 22-23

## Jail-Crowding Issue Pops Lid off Pressure-Cooker Meeting

By Susan Edgerley  
Staff Writer

Long-simmering tensions exploded into a war of the words Wednesday as Sedgwick County commissioners fought over who should work on plans to relieve jail overcrowding.

At issue was a frequent point of contention between commissioners Tom Scott and Don Gragg — the role of County Administrator Tim Witsman, a commission appointee, and how big a part he should play in county government.

The battle had Gragg, a Republican, archly noting that he "didn't realize Commissioner Scott was such an expert in jails and corrections."

Scott, a Democrat, countered that Gragg



Gragg

The hot county debate began with a remark by Tom Scott concerning Don Gragg's recent trip to a jail seminar.



Scott

was running a "one-man show," and had "all these fancy, high recommendations of his but no means of funding."

Almost since Gragg took office in 1979,

he and Scott have tussled over issues ranging from who should run commission meetings to whether the sheriff's pay should be withheld. But seldom has the battle been as

open and bitter as it was Wednesday.

The fighting raised questions over whether the county might have trouble getting the sheriff, the district attorney and the courts to cooperate on jail planning as well.

At least one official at Wednesday's meeting, District Attorney Clark Owens, said the tone of discussion "didn't surprise me," and "could cause problems." And Gragg said he thought Scott's position would make it harder for county administrators to develop a plan to ease jail crowding.

Commissioners eventually agreed that Witsman should coordinate jail research and study. But before that, Scott, a longtime political power in Sedgwick County, declared he wasn't going to give up any au-

thority, and was himself working on a solution to jail crowding.

Scott, the sole Democrat on the commission, has long worried that his power would be usurped if Witsman's job were expanded into one similar to Wichita City Manager Gene Denton's. Besides that, Scott was angry that Gragg, who recently had returned from a national seminar on jails, was running a "one-man show."

So Scott threw the first stone by saying he might not know about jail problems "in Washington" — where Gragg's jail conference was — but he knew about problems in Sedgwick County. And he said he had a few ideas of his own on what to do about the packed prisoner population.

●CROWDING, 5D, Col. 1

## Grand Jury Calls Five To Testify

Prostitution Probe  
Over Until January

By Joe Earle  
And Jim Cross  
Staff Writers

Five women testified Wednesday before a Wichita federal grand jury as it finished a second and final day of hearings into possible federal prostitution-related crimes.

Another grand jury will meet in January, and a federal prosecutor said more witnesses probably will be called then.

The five who testified Wednesday brought to 13 the number of witnesses to appear before the grand jury this week. All but one were women.

The federal investigation is related to a civil suit filed in Sedgwick County District Court that claims 12 Wichita rap parlors and escort services are connected to organized prostitution and asks that they be padlocked.

In a related development, a woman was charged in Sedgwick County District Court with maintaining a house of prostitution at a west Wichita escort service. Tonya M. Garcia, 431 N. Madison, faces misdemeanor charges of promoting prostitution. The charges say she operated Tracy's Close Encounters at 1301 W. Douglas. Garcia also was named in the civil suit last month.

The federal grand jury returned no prostitution-related indictments before concluding its session Wednesday.

"We are looking first and foremost at the pimps," Assistant U.S. District Attorney Jack Williams said. "We've got some more people to call at some time before we can determine what we have."

"We had information prior to the grand jury that indicated there was prostitution in this area and pimps operating in this area, and we're determining whether there is any kind of interstate involvement."

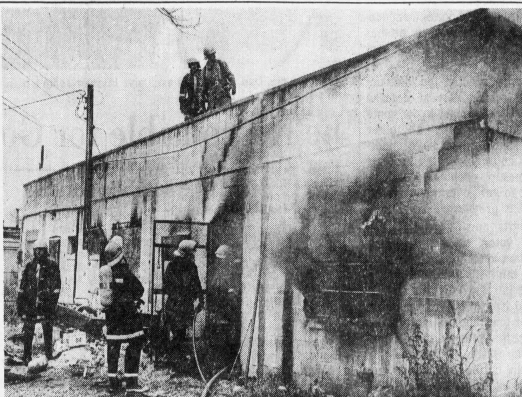
Transporting women across state lines for prostitution is a federal crime carrying penalties of up to five years in prison and a \$5,000 fine.

Grand juries can hold closed-door investigations during which witnesses testify under oath. Grand juries can also return indictments, which are formal criminal charges.

WILLIAMS SAID six of the 21 people originally subpoenaed to testify could not be found. Two others were subpoenaed but not called before the grand jury, he said.

Of the 13 witnesses who did appear, only one — Darnel Bates — was male. Bates was identified in the civil suit filed last month as the operator of "Champagnes Outcall Service," 2920 Hadden, one of the

●PROSTITUTION, 15D, Col. 1



## The Smoke Of a Day's Work

A faulty furnace motor was blamed for a fire Wednesday afternoon at a building in the 1700 block of North Poplar. Firefighters located the source of the fire in a storage area of a club. The fire did not reach two vacant businesses and a pool hall in the same building, although there was smoke damage throughout the structure. Fire officials estimated \$15,000 damage to the building and \$6,000 damage to the contents.

Santa Fabio/Staff Photographer

## Lineberger to Leave Wichita for Pulpit in Texas

By Tom Webb  
Staff Writer

The Rev. Phil Lineberger has resigned as pastor of Metropolitan Baptist Church to become senior pastor of the fast-growing 4,000-

member Richardson Heights Baptist Church in Richardson, Texas.

The move will put Lineberger, already a leader in the Southern Baptist Convention at age 37, at a prominent church in the affluent northern suburbs of Dallas — and in the heartland of Baptist strength and conservatism.

During his three-year pastorate, Lineberger reversed Metropolitan's slump in membership and Sunday school attendance. About 750 members joined the church during his tenure, Sunday school attendance topped 900, giving increased 51 percent in the past two years, and a \$750,000 expansion of its classroom facilities is ending.

"I have considered myself a conservative, and that used to be a good word. . . . Now you have to be a fundamentalist."

— The Rev. Phil Lineberger

LAST SUNDAY, he gave his final sermon at Metropolitan. He will take the pulpit in Richardson on Sunday.

"The ministry I was able to do here for three years was basically a bridge between the first 20 years, and bridging it into an aggressive, outreach-oriented church that wants to grow," Lineberger said.

Metropolitan was formed in 1962

after a bitter struggle divided the membership of First Baptist Church. In 1981, he and the Rev. Roger Fredrickson, pastor of First Baptist, held a joint service and shared the pulpit — the first reunion in nearly 20 years.

"It's got a positive, creative attitude toward the ministry," Fredrickson said. "Of course, I've been grateful because we've been able to

share the new openness between our two churches. His leadership has been a very, very significant factor."

LINEBERGER MAINTAINED a high profile both in Wichita and in the 13.8-million-member Southern Baptist Convention.

"I will be less prominent in the Dallas area as far as the Southern Baptist Convention is concerned than I was at Metropolitan, which is the flagship church of the Kansas-Nebraska area," Lineberger said.

But it will nonetheless put him in the heart of Baptist strength.

●LINEBERGER, 5D, Col. 1

## People Helping People At Christmas

### Holiday Blood Drive Set

In the spirit of Christmas, the American Red Cross and Greater Downtown Wichita are asking for gifts of blood to help area hospitals make it through the holidays again this year.

Demand for blood runs high around Christmas, but supplies tend to run low, because people who ordinarily find time to donate are busy with other activities.

To address the problem, the Red Cross and Greater Downtown have scheduled the Fourth Annual Holiday Donor Days Blood Drive from Dec. 17 through Jan. 3 at the Red Cross Blood Center, 707 N. Main.

If you're between the ages of 17 and 65, weigh at least 110 pounds and are in good health, you probably would make a good donor. If you're older than 65, you may donate within four weeks after getting a doctor's permission.

Donors should count on spending 45 minutes to an hour at the Red Cross office. Hours are 9 a.m. to 4:30 p.m. Monday, Tuesday, Thursday and Friday, and 10 a.m. to 8 p.m. Wednesday.

For more information or to make an appointment, call 267-4371 between 8 a.m. and 4:30 p.m. weekdays.

If your group is engaged in helping people during the holidays, the Eagle-Beacon would like to know about it. Send the information to People Helping People at Christmas, The Wichita Eagle-Beacon, Box 820, Wichita, Kan. 67201.

By Seth Effron  
Staff Writer

Greater Downtown Wichita Inc. voted Wednesday to merge with the Wichita Area Chamber of Commerce in the first week of 1983.

Russell Gordon Sr., president of the downtown group, said the general membership meeting voted unanimously to ratify its board of directors' recommendation. "The public will be pleased," Gordon said.

About 35 people in the 135-member group attended Wednesday's meeting.

"We do believe it's the right time



Gordon  
... "The public will be pleased."

to move forward in a combined effort so we can be more efficient in utilizing our resources," said Richard Upton, president of the Wichita Area Chamber of Commerce.

He said there would be a separate downtown division within the chamber, with its own budget. The chamber board of directors voted to name Gordon vice chairman of the greater downtown division. That position places Gordon on the chamber board of directors, Upton said.

For the last 22 years, Greater Downtown Wichita had been an independent group and the chief promoter of downtown interests. When Ernest Owens, its executive director, resigned last month to take a job in Texas, the downtown group began pursuing a merger with the chamber.

Upton said some of the downtown projects the chamber had decided to pursue next year included a new parking facility, sale of Union Station on the 600 block of East Douglas for development, a hotel downtown, residential development and making sure the convention center project continues.

Upton said a full-time staff person to head the downtown division would be named shortly after the first of the new year. "We'll look ... and see if there is a person well qualified on the staff (of the chamber now) to do that job," Upton said.

