



**BISMARCK POLICE
DEPARTMENT**
Crime and Traffic Analysis Report

2020



- I. Introduction----- 2
- II. Statistical Summary for Group A Offenses for 2020
 - A. 2020 Historical Perspective on Group A Offenses----- 3
 - B. Crimes Against Persons Group A Offenses ----- 3
 - B. Crimes Against Property Group A Offenses----- 4
 - C. Comparison Table Group A Offenses----- 5
- III. Statistical Summary for Group B Offenses for 2020
 - A. 2020 Historical Perspective on Group B Offenses----- 6
- IV. Statistical Summary for Group C Offenses for 2020
 - A. 2020 Historical Perspective on Group C Offenses----- 7
- V. Adult Arrest Statistics ----- 8-9
- VI. Juvenile Arrest Statistics
 - A. Juvenile Citation Information ----- 10
 - B. Total Juvenile Citations 2016-2020 ----- 11
- VII. Temporal Distribution of Criminal Activity
 - A. 2020 Criminal Activity (Reported Incidents) by Day of Week----- 12
 - B. 2020 Criminal Activity by Hour (Day & Night Shift) ----- 13
 - C. Criminal Activity Day vs. Night Shift ----- 13
- VIII. Calls for Service
 - A. Total 9-1-1 Calls 2016-2020 ----- 14
 - B. Case Numbers Assigned, Total Traffic Stops, Total Calls for Service 14
 - C. Calls for Service by Beat Area ----- 14
 - D. 2020 Calls for Service by Day of Week----- 15
 - E. 2020 Calls for Service by Hour ----- 15
 - F. Calls for Service/Criminal Activity by Hour ----- 16
- IX. Summary and Limitations
 - A. Summary and Group C Activity Analysis ----- 17
- X. Traffic Analysis
 - A. Parking Citations 2016-2020----- 18
 - B. DUI Arrests 2016-2020 ----- 18
 - C. Traffic Citations 2016-2020 ----- 19
 - D. List of Most Cited Offenses (minimum 100) ----- 19
 - E. Traffic Crashes 2016-2020 ----- 20



INTRODUCTION

The 2020 Bismarck Police Department Crime and Traffic Analysis Report is a consolidation of information primarily retrieved from the Records Management System (RMS) and Computer Aided Dispatch (CAD).

The Bismarck Police Department is required to report our crime statistics to State and Federal agencies by law. The reporting system we use is called NIBRS (National Incident Based Reporting System). NIBRS breaks crimes down into Group "A", Group "B", and Group "C" categories. Group A includes a further breakdown of: Crimes Against Persons and Crimes Against Property.

The information contained in this analysis document is a result of the collection of annual data, using the NIBRS standards. The statistical representation depicted in the following tables for Group A, B, and C offenses are the number of actual offenses reported to the Bismarck Police Department. The following tables do not address the dispositions of the reported offenses. All reported offenses are entered into the Records Management System by trained Records Technicians. NIBRS only requires Groups "A" and "B" to be reported to State and Federal agencies.

Specific information provided for NIBRS Group A, B, and C offenses are tabulated by Administrative Services.



2020 HISTORICAL PERSPECTIVE ON GROUP A OFFENSES

Group A offenses consist of the serious crimes against persons, generally felonies by statute; some crimes of vice to include gambling, prostitution and drug offenses; and larcenies which also include fraud. The NIBRS reporting requirements for these offenses are much more extensive than for the offenses classified in Group B and Group C.

Crimes Against Persons

Group A Offenses	2016		2017		2018		2019		2020		%Change 2019-2020
Murder	2		0		2		0		0		*N/C
Manslaughter	0		0		0		0		1		*N/C
Forcible Rape	39		46		45		64		58		-9.38%
Forcible Fondling	82	53	77	56	103	75	78	58	90	69	15.38%
Forcible Sodomy		10		3		8		8		1	
Incest		0		0		2		1		2	
Statutory Rape		19		18		18		11		18	
Aggravated Assault	142		158		128		117		170		45.30%
Simple Assault	920	781	915	785	894	718	869	717	1061	868	22.09%
Intimidation		114		113		148		131		165	
Stalking ¹		25		17		28		21		28	
Kidnapping ²	13		11		16		19		19		0.00%
Human Trafficking ³			2		3		3		6		100.00%
TOTAL	1,198		1,209		1,191		1,150		1,405		22.17%

¹Not Calculable

² Kidnapping includes Felonious Restraint and Human Trafficking prior to 2017

³ Human Trafficking is tracked separately beginning in 2017

In 2020 there was a 15.38% increase in the number of sex crimes reported. The majority of reported sex crimes were reported as Forcible Fondling incidents. Statutory rape reports increased from 11 to 18 in 2020. The great majority of the incidences of sexual assault involve situations in which the victim knows or is acquainted with the perpetrator.

Aggravated assault cases increased 45.30% from 2019. Alcohol was involved in 34.71% of the total Aggravated Assaults. When broken down into Domestic Aggravated Assaults there were 41.94% that involved alcohol. Lesser offenses of personal (simple) assault increased from 2019 by a total of 21.05%.

Domestic Violence continues to be a primary concern due to its frequency and percentage of the assault reports received by the department. Of the 170 aggravated assaults in 2020, 93 (54.7%) were related to domestic violence. Of the 868 simple assaults in 2020, 452 (52.08%) were related to domestic violence. Of those 452 domestic simple assaults, there were 161 or 35.62% of the total domestic simple assaults involved alcohol. Assaults related to domestic violence comprised approximately 52.5% of the total assault reports in 2020.



Human Trafficking was included in Kidnapping/Abduction charges prior to 2017. Technically by definition, almost every prostitution case could be considered human trafficking, but rarely do they get charged out as such because of lack of cooperation. We investigated six human trafficking cases this year, which is an increase from three in 2019.

Crimes Against Property

Group A Offenses	2016	2017	2018	2019	2020	%Change 2019-2020					
Arson	6	5	3	5	12	140.00%					
Burglary	399	296	252	231	334	44.59%					
Counterfeit/Forgery	109	218	151	169	127	-24.85%					
Fraud-False Pretenses	331	193	392	222	327	207	325	315	173	-3.08%	
Fraud-Credit Card		100		127		82					92
Fraud-Impersonation		34		37		32					18
Fraud-Wire Fraud		4		6		6					4
Destruction/Damage/Vand	742	609	586	581	742	27.71%					
Possession of Stolen Property	81	69	91	73	73	0.00%					
Robbery	29	34	24	37	28	-24.32%					
Motor Vehicle Theft	309	219	226	155	192	23.87%					
Pocket Picking	1771	1	1969	1	1640	2	1728	1971	1	14.06%	
Shoplifting		558		884		630			686		776
Theft from Building		424		337		350			381		369
Theft from Coin Machine		5		6		6			19		6
Theft from Motor Vehicle		305		236		218			241		280
Theft of MV Parts		59		50		54			47		88
Other Theft/Larceny		419		455		380			350		451
Drug/Narcotic Violation	753	900	918	979	776	-20.74%					
Drug Paraphernalia/Equip	757	803	1103	889	801	-9.90%					
Embezzlement	44	57	34	30	36	20.00%					
Gambling Offenses	1	0	0	1	4	300.00%					
Pornography/Obscenity	32	42	37	34	39	14.71%					
Prostitution	10	30	7	20	12	-40.00%					
Weapon Law Violations	83	72	98	100	71	-29.00%					
TOTAL	5,599	5,487	5,715	5,357	5,533	3.29%					

*Not Calculable

Group A property crimes for 2020 increased overall by 3.29%. Possession of Stolen Property offenses remained the same from 2019. Vandalism offenses increased 27.71%. Motor Vehicle Theft increased 23.87% from 2019. Burglary offenses increased 44.59% in 2020.

Drug/Narcotic Violation offenses decreased 20.74%. Drug Paraphernalia/Equipment decreased 9.90%. Due to the COVID 19 pandemic in 2020 there were several months that had little or no

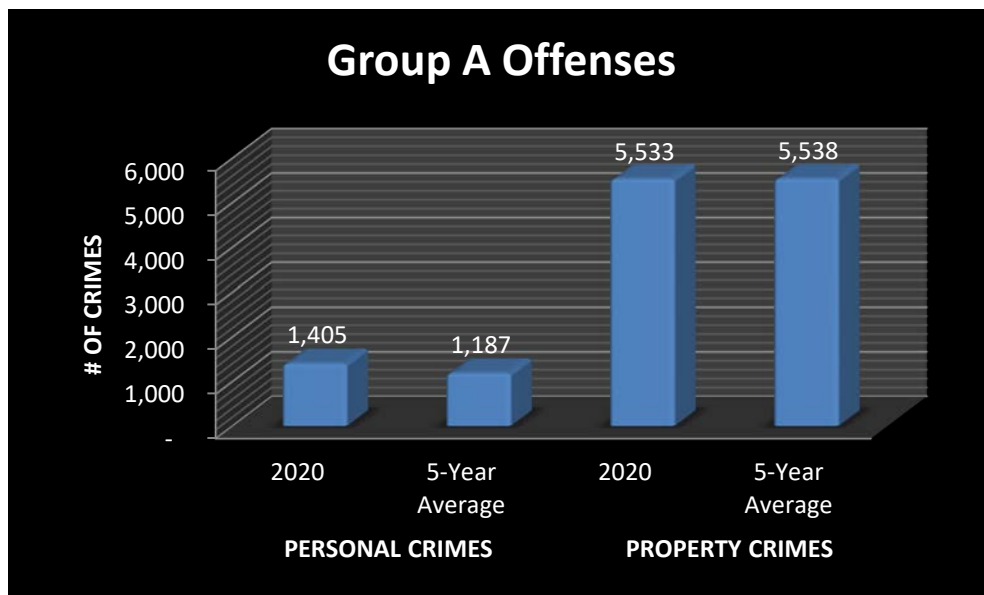


self-initiated activity by officers. Looking at the calls for service for Drug/Narcotic Violations 59.56% were self-initiated.

Group A Offenses, **Crimes Against Persons** increased 22.17% from 2019. This year's numbers are above the 5-year average (1,405 reported in 2020 compared to the 5-year average of 1,187).

Group A, **Crimes Against Property** increased 3.29% from 2019. This year's numbers are slightly below the 5 year average (5,533 reported in 2020 compared to the 5-year average of 5,538).

The chart below shows the comparison for Group A Offenses (Persons and Property) for 2020 with that of the five year average.



- The total of 2020 **Personal Crimes** is 18.37% above the 5 Year Average.
- The total of 2020 **Property Crimes** is 0.09% below the 5 Year Average.
- Overall, Group A Offenses, Personal and Property combined increased 431 offenses or 6.62% from 2019 to 2020.
- The population for Bismarck 2020 was approximately 73,829 which is about a 1.95% increase from 2019.
- The Personal Crimes for Group A Offenses per capita is 19.03 crimes per 1000 people, compared to 2019 this is an increase of 20.90%.
- The Property Crimes for Group A Offenses per capita is 74.94 crimes per 1000 people, compared to 2019 this is an increase of 2.28%.



HISTORICAL PERSPECTIVE ON GROUP B OFFENSES

Group B Offenses

Group B Offenses	2016	2017	2018	2019	2020	%Change 2019-2020
Bad Checks	2	4	4	11	5	-54.55%
Family Non-Violent	128	112	116	129	139	7.75%
DUI	506	590	380	340	335	-1.47%
Liquor Laws	114	115	186	248	237	-4.44%
Drunkenness (Detox)	384	344	386	428	208	-51.40%
Disorderly Conduct	524	508	505	527	473	-10.25%
Peeping Tom	7	3	8	3	3	0.00%
Trespassing	292	353	335	461	427	-7.38%
Curfew	13	15	21	12	28	133.33%
Runaway	134	169	179	183	207	13.11%
All Other Offenses*	1023	1069	1203	1139	1149	0.88%
TOTAL	3,127	3,282	3,323	3,481	3,211	-7.76%

In the NIBRS coding, Group B offenses are generally misdemeanor offenses that usually become reported to the police when an arrest is made. The reporting requirements are considerably less stringent than those for Group A offenses, however, any arrests must be reported.

Group B offenses decreased overall by 7.76% in 2020. Drunkenness decreased 51.40% from 2019. The overall decrease in Group B Offenses was 270 offenses. Again this may be attributed to the COVID 19 pandemic with several months of little or no self-initiated officer activity.

*There are over 200 different offenses in this category. They include but are not limited to Failure to Control or Report Fire, Hazing, Kill or injure police dog, Reckless Endangerment, Deny Exercise of Civil Rights, Discrimination in Public, False 911 Emergency Report, Harassing Phone Call/letter, Harassment of 911 Emergency, Interfere w/Telephone during Emergency Call – Intentional, Interfere w/phone during Emergency Call – Knowingly/Reckless, Obscene Phone Call, Criminal Facilitation, Criminal Solicitation, Disobedience of Judicial Order, Failure to Appear, to produce information, or to be sworn, False Statement, Offender Registration - sex offender fail to register, Perjury, Tampering with Evidence, Tampering with Witness, Violation of Domestic Violence Protection Order, Violation of Disorderly Conduct Restraining Order, Adult use minor to aid/assist in manf/delivery or possess w/intent drug offense, Controlled Subst. Exposure to Children and Vulnerable Adult - causing death, Inhalation of Vapors - Volatile Chemicals, Maintain place for illegal drug consumption, storage, or sale, Retail sale of non-liquid methamphetamine precursor drugs, Over the Counter Sale - greater - 2 packages meth precursor drugs, Over the counter sale meth precursor drug to person - less – 18, Child Procurement, Contribute to Deprivation of Minor - less than 16 - Sexual Conduct, Contribute to Deprivation or Delinquency of Minor, Criminal Street Gang Crime, Recruit Street Gang Members, Purchasing Dead Human Body, Unlawful Removal of Dead Human Body, Hunting/Trapping/Fishing Laws, Illegal Alien, Escape, Fail to Appear after release - Bail jump on felony or conviction, Military - AWOL, Desertion, False Statement under Oath, Aid Consummation of Crime, Disarm Law Enforcement Officer, False Info to Law Enforcement, Fleeing a Police Officer, Harboring Runaway Minor, Hindering Law Enforcement, Obstruct Government Function, Possess/Introduce Firearm, or other dangerous weapon to escape, Prevent arrest on felony charge, Prevent arrest on misdemeanor or infraction charge, Tampering with Informant, Disclosure of Confidential Information, Permitting Escape, Inciting to Riot, Bigamy, Deviate Sexual Act, Fornication in Public, Indecent Exposure, Luring Minor by Computer, Sexual Abuse of Ward, Sexual Exploitation by Therapist, Solicitation of Minor, Possession of Altered Property, Sale of Tobacco to Minor, Use of Tobacco by Minor, Own/Operate/Conduct Chop Shop, Treason, Tamper with, disable or falsely sound fire alarm, Tamper with or disable fire suppression equipment, Truancy



HISTORICAL PERSPECTIVE OF GROUP C OFFENSES

Group C Offenses (Reports Generated)

Group C Offenses	2016	2017	2018	2019	2020	% Change 2019-2020
Missing Persons	54	50	61	75	78	4.00%
Alarm Calls	1	1	2	4	2	-50.00%
Door Found Open	5	0	1	2	2	0.00%
Fire Calls	27	37	21	13	25	92.31%
Non Veh. Accidents	0	0	0	0	0	*N/C
Suicide - Attempted	58	57	85	38	46	21.05%
Suicide - Completed	9	18	16	12	26	116.67%
Unattended Deaths	63	73	68	64	83	29.69%
Ambulance Requests	74	94	112	113	174	53.98%
Found Property	455	505	482	440	593	34.77%
Lost Property	128	124	123	124	103	-16.94%
Mental Cases	58	57	69	67	73	8.96%
MV Recovered/Other Agency	8	9	2	0	3	*N/C
Domestic Disputes	218	194	226	194	235	21.13%
Other Family	13	9	7	15	15	0.00%
Dumping Garbage	1	2	1	1	3	200.00%
Hazardous Materials	0	2	1	0	0	*N/C
Littered Yard	1	2	7	5	3	-40.00%
Other Health/Safety	6	8	5	11	11	0.00%
Animal Bites	44	58	63	85	33	-61.18%
Animal Call, Other	628	609	590	679	643	-5.30%
Loitering	1	0	3	1	0	-100.00%
Loud Party	12	16	13	11	5	-54.55%
Warrant for Other Agency	1037	1171	1318	1254	634	-49.44%
Other Warrant Reports	1846	2015	1790	1731	682	-60.60%
Other Public Peace	140	133	139	159	181	13.84%
Vehicle Impounds	497	430	409	571	467	-18.21%
Other Traffic Reports	1859	2345	2578	2241	2052	-8.43%
Civil Process/Notice to Quit	57	55	57	39	73	87.18%
TOTAL	7,300	8,074	8,249	7,949	6,245	-21.44%

*Not Calculable

NIBRS uses the Group C category to collect those offenses in which Society may be the victim. These include offenses against the public order, health code violations and animal type situations.

When compared to 2019 Group C offenses decreased by 21.44% in 2020. The greatest percent of change was recorded in categories with fewer reports overall. Some of the highest percentage increases were a 200% increase for Dumping Garbage Calls (going from 1 to 3) and Suicide – Completed (going from 12 to 26). There was a 100% decrease in Loitering Calls (going from 1 to 0). Domestic disputes increased 21.13% in 2020. There were 2,036 Calls for Service for Domestic in 2020 compared to 1,819 calls in 2019. This shows an increase of 11.93%.



ADULT ARREST ANALYSIS

Offenses	2016	2017	2018	2019	2020	% Change 2019-2020	% Change from 5 year Average
Aggravated Assault	70	72	66	64	86	34.38%	20.11%
All Other (Group B)	875	862	902	708	521	-26.41%	-32.65%
Animal Call	38	8	3	8	19	137.50%	25.00%
Arson	1	3	3	3	3	0.00%	15.38%
Bad Checks	-	-	3	4	-	-100.00%	-100.00%
Bribery	-	-	-	1	-	-100.00%	-100.00%
Burglary	32	36	35	31	37	19.35%	8.19%
Counterfeit - Forgery	22	41	34	26	20	-23.08%	-30.07%
Dest/Damage/Vand	108	90	90	70	81	15.71%	-7.74%
Disorderly Conduct	206	186	147	196	136	-30.61%	-21.93%
Drug Equip Violation	742	739	880	825	488	-40.85%	-33.59%
Drug Violation	829	924	1,164	1,043	546	-47.65%	-39.41%
DUI/APC	499	589	380	340	335	-1.47%	-21.84%
Embezzlement	22	21	14	11	15	36.36%	-9.64%
Family, Nonviolent	46	42	37	39	32	-17.95%	-18.37%
Forcible Fondling	7	6	6	7	2	-71.43%	-64.29%
Forcible Rape	1	5	6	7	4	-42.86%	-13.04%
Forcible Sodomy	1	-	-	-	-	N/C	N/C
Fraud - Credit Card	10	10	8	9	11	22.22%	14.58%
Fraud - False Pre/Swin	82	80	70	61	35	-42.62%	-46.65%
Fraud - Impersonation	11	16	6	3	2	-33.33%	-73.68%
Human Trafficking	-	3	-	1	-	-100.00%	-100.00%
Intimidation	58	58	66	66	67	1.52%	6.35%
Kidnapping/Abduction	9	8	6	12	12	0.00%	27.66%
Liquor Law Violations	119	133	171	251	216	-13.94%	21.35%
Loud Party	8	2	5	2	2	0.00%	-47.37%
Motor Vehicle Theft	52	31	41	24	34	41.67%	-6.59%
Murder/Non-Neg M/S	2	-	1	-	-	N/C	-100.00%
Other Traffic	1,950	2,569	2,816	2,339	2,046	-12.53%	-12.71%
Peeping Tom	2	2	-	1	1	0.00%	-33.33%
Porno/Obscene Mat.	6	10	4	5	4	-20.00%	-31.03%
Prostitution	6	16	10	6	3	-50.00%	-63.41%
Robbery	13	12	9	17	10	-41.18%	-18.03%
Shoplifting	372	575	463	494	441	-10.73%	-5.97%
Simple Assault	309	320	290	309	349	12.94%	10.65%
Stalking	3	2	5	4	2	-50.00%	-37.50%
Statutory Rape	6	6	7	3	2	-33.33%	-58.33%
Stolen Property	70	51	59	48	36	-25.00%	-31.82%
Theft - All Other	44	56	61	78	48	-38.46%	-16.38%
Theft - from Building	64	50	44	52	34	-34.62%	-30.33%
Theft - from M/V	28	24	22	14	25	78.57%	10.62%
Theft - M/V Parts/Acc.	5	2	-	1	2	100.00%	-20.00%
Trespass	240	269	242	367	272	-25.89%	-2.16%
Weapon Laws	66	47	70	76	38	-50.00%	-36.03%
Total Charges for Year	7,034	7,976	8,246	7,626	6,017	-21.10%	-18.47%

*Not Calculable



The arrest data shown above is for the arrests of adults only. Juvenile arrest data will be shown in the following section. Total adult arrest charges for 2020 decreased 21.10% from 2019. Total adult arrest charges for 2020 is below the 5 year arrest average. A variety of factors affect the arrest rate, to include:

- 1) Special enforcement emphasis in certain areas, such as grant funded DUI enforcement projects;
- 2) Department priority, such as increased emphasis on crimes of drug violations due to increased occurrence of these offenses; and,
- 3) Limitation on officer time to perform proactive enforcement due to increased time on calls for service and other demands on officer time.
- 4) Little or no self-initiated officer activity for several months during the height of the COVID 19 pandemic resulted in lack of contacts, crime detection and arrests.

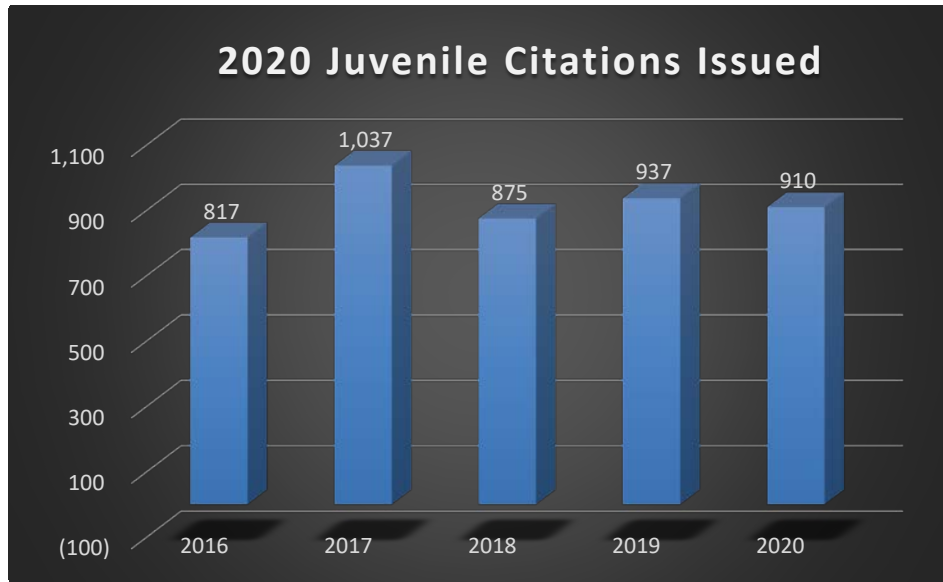
There were 4,340 individuals arrested in 2020 compared 5,367 individuals arrested in 2019, this is a decrease of 23.66%.



JUVENILE OFFENSE CITATION ANALYSIS

Offenses	2016	2017	2018	2019	2020	% change 2019 to 2020	% change from 5 year average
Aggravated Assault	6	9	6	3	9	200.00%	36.36%
All Other (Class B)	107	173	194	179	123	-31.28%	-20.75%
Animal Call Other	0	1	1	0	0	*N/C	-100.00%
Arson	0	2	0	2	0	-100.00%	-100.00%
Burglary/B&E	3	6	5	9	6	-33.33%	3.45%
Counterfeit/Forgery	0	1	0	0	1	*N/C	150.00%
Curfew/Loitering/Vagrancy	25	29	31	16	56	250.00%	78.34%
DUI/APC	5	1	1	1	3	200.00%	36.36%
Dest/Damage/Vandal	30	31	22	37	41	10.81%	27.33%
Disorderly Conduct	144	120	107	106	91	-14.15%	-19.89%
Drug Equip Viol	42	58	50	40	38	-5.00%	-16.67%
Drug Violation	68	115	97	75	60	-20.00%	-27.71%
Embezzlement	3	3	0	0	2	*N/C	25.00%
Extortion/Blackmail	0	0	0	0	0	*N/C	*N/C
Family, Nonviolent	0	0	0	0	1	*N/C	400.00%
Fire Call	0	0	0	0	0	*N/C	*N/C
Forcible Fondling	2	1	6	8	2	-75.00%	-47.37%
Forcible Rape	0	0	0	0	2	*N/C	400.00%
Forcible Sodomy	0	0	2	1	1	0.00%	25.00%
Fraud-Credit Card	0	1	0	2	2	0.00%	100.00%
Fraud-False Pret/Swindle	0	3	1	2	7	250.00%	169.23%
Fraud-Impersonation	2	2	0	0	0	*N/C	-100.00%
Incest	0	0	1	0	0	*N/C	-100.00%
Illegal Alien	0	0	0	0	0	*N/C	*N/C
Intimidation	6	11	21	15	12	-20.00%	-7.69%
Kidnapping/Abduction	0	0	3	0	0	*N/C	-100.00%
Liquor Law Violations	42	71	31	70	52	-25.71%	-2.26%
Loud Party	0	0	0	0	0	*N/C	*N/C
Motor Vehicle Theft	5	5	6	6	12	100.00%	76.47%
Other Public Peace	0	0	0	0	0	*N/C	*N/C
Other Traffic	29	22	23	24	28	16.67%	11.11%
Peeping Tom	1	0	0	0	0	*N/C	-100.00%
Porno/Obscene Materials	4	10	2	2	9	350.00%	66.67%
Robbery	0	1	2	3	1	-66.67%	-28.57%
Runaway	112	153	127	152	183	20.39%	25.86%
Simple Assault	53	52	63	66	62	-6.06%	4.73%
Stalking	0	0	0	2	0	-100.00%	-100.00%
Statutory Rape	1	1	0	1	2	100.00%	100.00%
Stolen Property	9	2	12	4	4	0.00%	-35.48%
Theft-All Other	7	4	2	8	5	-37.50%	-3.85%
Theft-From Building	19	6	8	10	13	30.00%	16.07%
Theft-From Coin Machine	0	0	0	1	0	-100.00%	-100.00%
Theft-From Motor Veh	4	2	3	2	2	0.00%	-23.08%
Theft-M/V Parts/Access.	0	0	0	0	0	*N/C	*N/C
Theft-Shoplifting	74	121	39	67	65	-2.99%	-11.20%
Trespass	7	14	6	13	9	-30.77%	-8.16%
Vehicular Manslaughter	0	0	0	0	0	*N/C	*N/C
Weapon Laws	7	6	3	10	6	-40.00%	-6.25%
Total Citations	817	1037	875	937	910	-2.88%	-0.57%

*Not Calculable



Overall total citations decreased 2.88% from 2019. Disorderly Conduct offenses decreased 14.15% and Liquor Law Violations decreased 25.71% from 2019. Drug Violations decreased 5% and Drug Equipment Violations decreased 20%. The total juvenile citations were 910, which is below the 5 Year Average of 915, a difference of 0.57%.

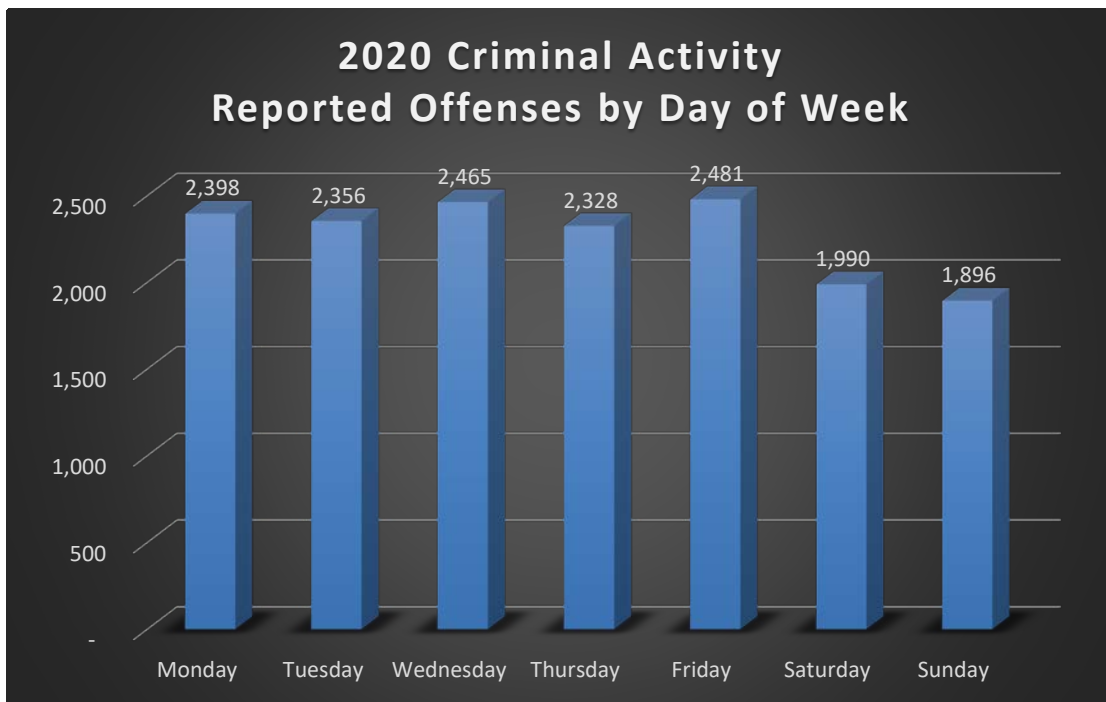
There were 729 individual juveniles cited in 2020, compared to 771 in 2019 that is a decrease of 5.76%. Again, little or no self-initiated officer activity for several months during the height of the COVID 19 pandemic resulted in lack of face to face contacts, crime detection and arrests.



TEMPORAL DISTRIBUTION FOR CRIMINAL REPORTS

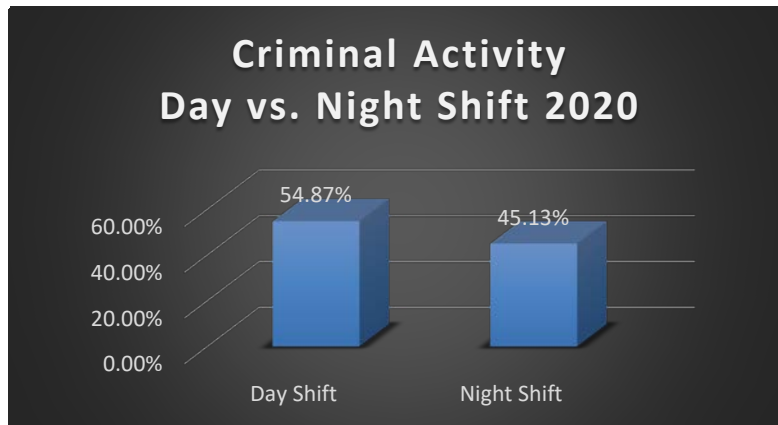
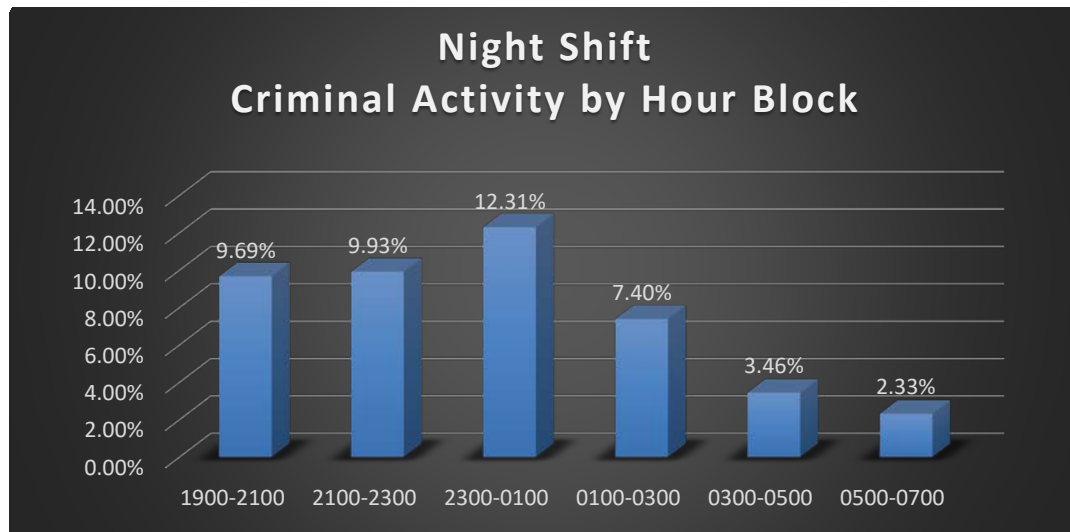
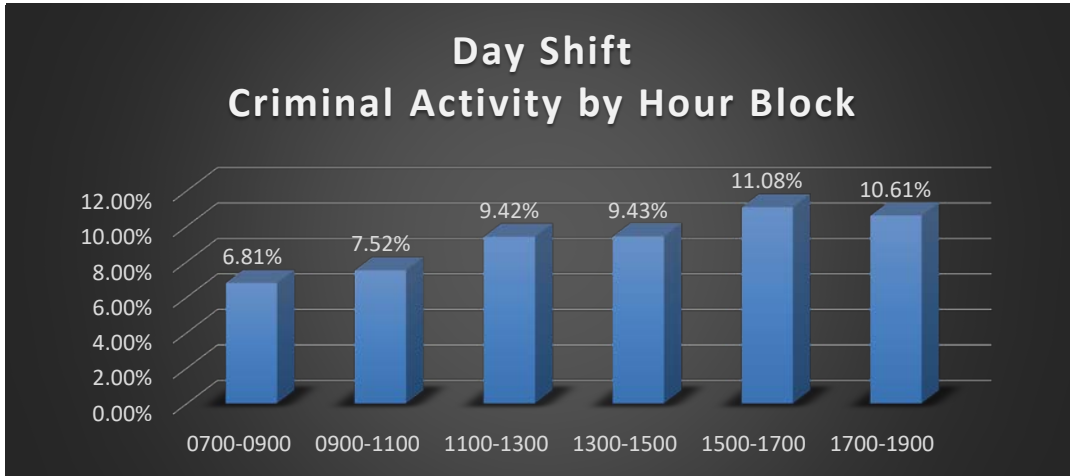
The following graphs and tables show the day of the week and hourly breakdown for all criminal offenses (where a report was made) as listed for Group A, B, and C Offenses under NIBRS. These numbers only reflect those incidents where a police report was generated and does not include those incidents that are traffic related. The time used for these tables is the “occur from” time. The police officer tries to establish the time that an offense occurs at the time of the report and often times there is a spread of hours. The day of week table charts the day that the report was filed.

Wednesday and Friday reported the most offenses for the week. They are also above the average of 2,273.



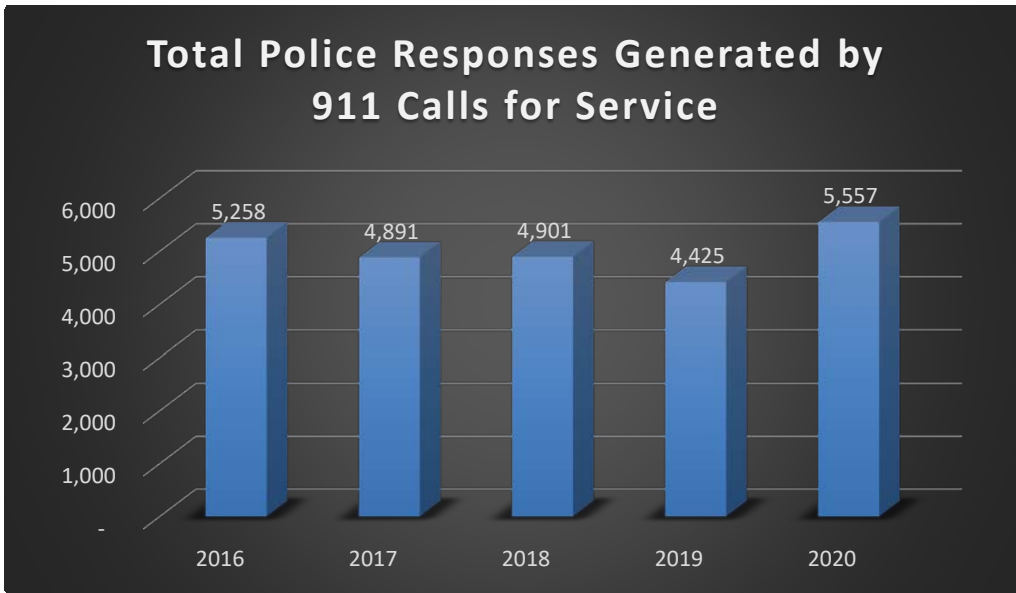


The following graphs show the criminal activity by hour block for the day shift and night shift. The day shift works a 12 hour shift which is from 0700-1900 hours and the night shift works a 12 hour shift which is from 1900-0700 hours. We also have a power shift that works from 1500-0300.





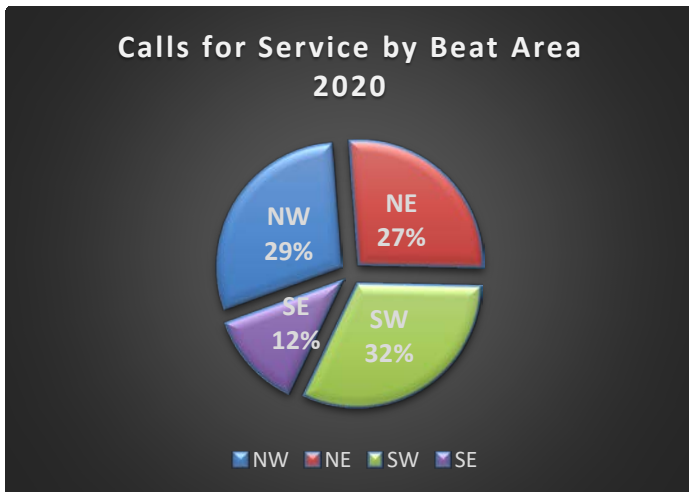
CALLS FOR SERVICE



In the CAD (Computer Aided Dispatching) system, calls for service are coded by priority. **During November 2018, we switched to a new system that records priorities differently than in previous years.**

Bismarck Police Officers made 16,468 Traffic Stops in 2019

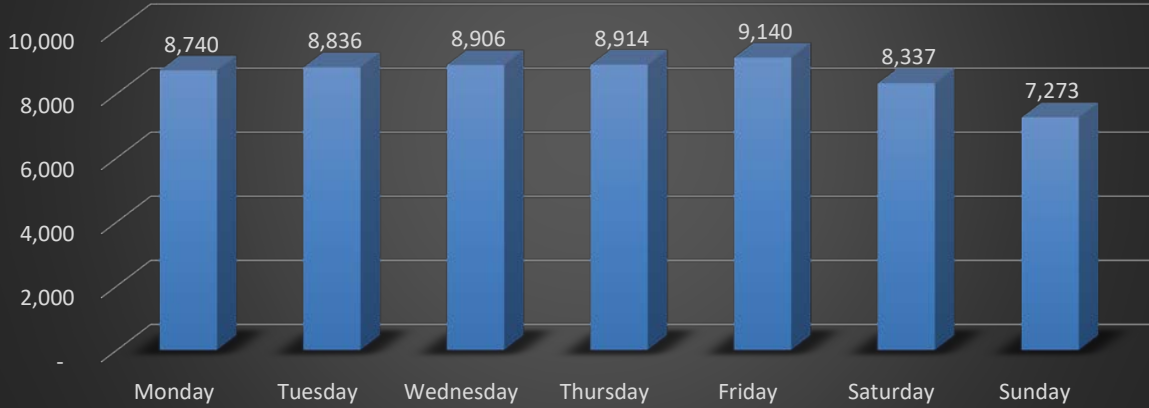
Case Numbers Assigned 2016-2020	
2016	23,733
2017	25,046
2018	26,601
2019	24,059
2020	23,042



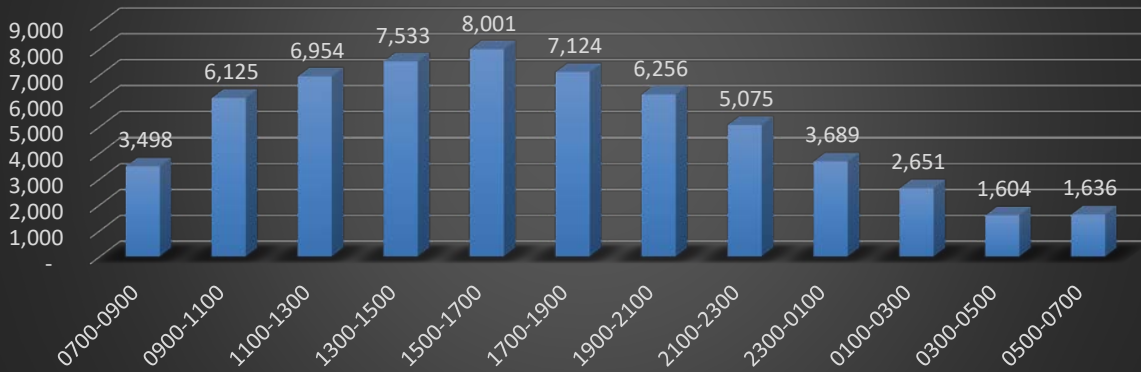
The southwest part of town is accounting for 31% of all calls for service. This area includes the Police Department, where many reports are made. The southeast is well below the others accounting for approximately 12%. The northwest part of town has the largest amount of population and is mostly residential. The southeast area is mostly a commercial and industrial area accounting for that area experiencing the fewest calls for service.



2020 Calls for Service by Day of Week

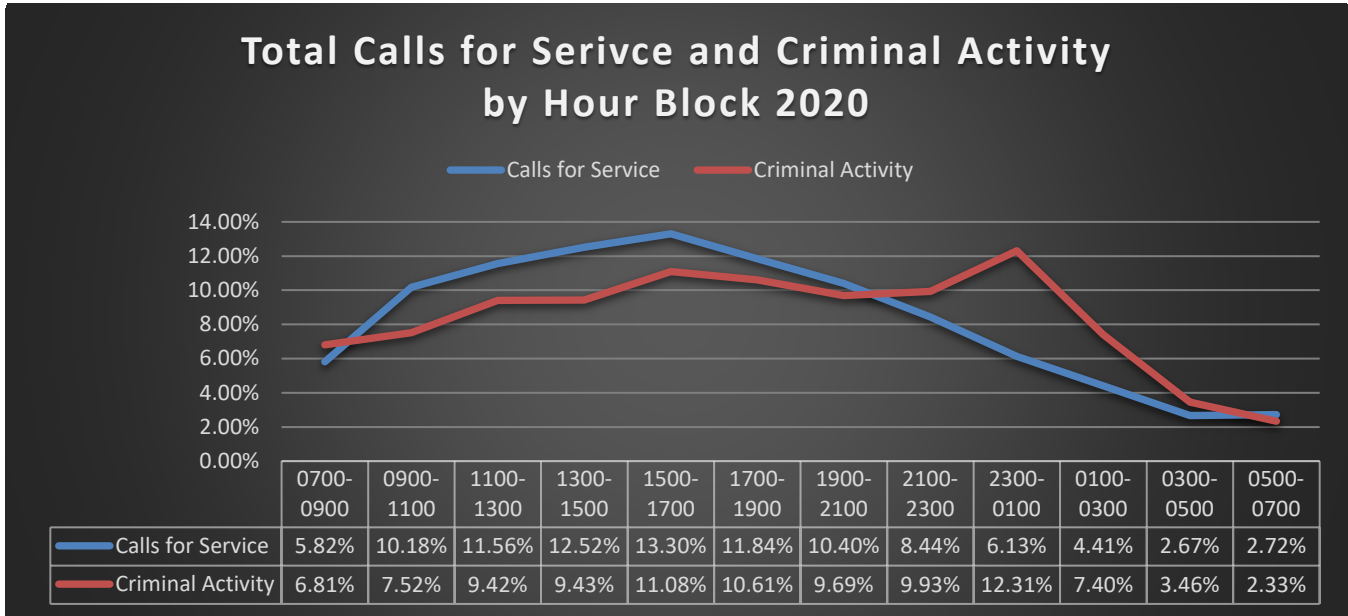


2020 Calls for Service by Hour Block





The following graph shows calls for service compared to criminal activity, which are reported in 2 hour blocks.



Since the Patrol Section compiles the highest volume of activity, we are using the hours of Patrol operation as the baseline for time study. Day shift is 0700-1900 and night shift is 1900-0700. The statistics for 2020 show 65.23% of the calls for service occur during the day shift and 34.77% occur during the night shift. Criminal activity (criminal incident reports filed with the department) was at 54.87% during the day shift and 45.13% during the night shift. The following table provides a graphical representation. More than likely, there are simple explanations for these differences. For example: there are fewer people awake at night to call in and generate a call for service, but the officers are out there working 24 hours a day, 7 days a week. Due to the switch in CAD systems, we are unable to give an accurate number of calls assigned in all priorities for 2020. Many of the more serious calls will have more than one or two officers dispatched to handle the call. Another factor to consider is that often times a person may not be able to accurately account for the actual time that an offense occurred. They call to report the offense during the day, but the offense likely occurred during the late night or early morning hours.

Time Frame	Calls for Service	Criminal Activity
0700-1900	65.23%	54.87%
1900-0700	34.77%	45.13%



SUMMARY AND LIMITATIONS

No records management system is perfect and therefore explanations are warranted to ensure the information is not misrepresented. The following bullets represent some of these limitations:

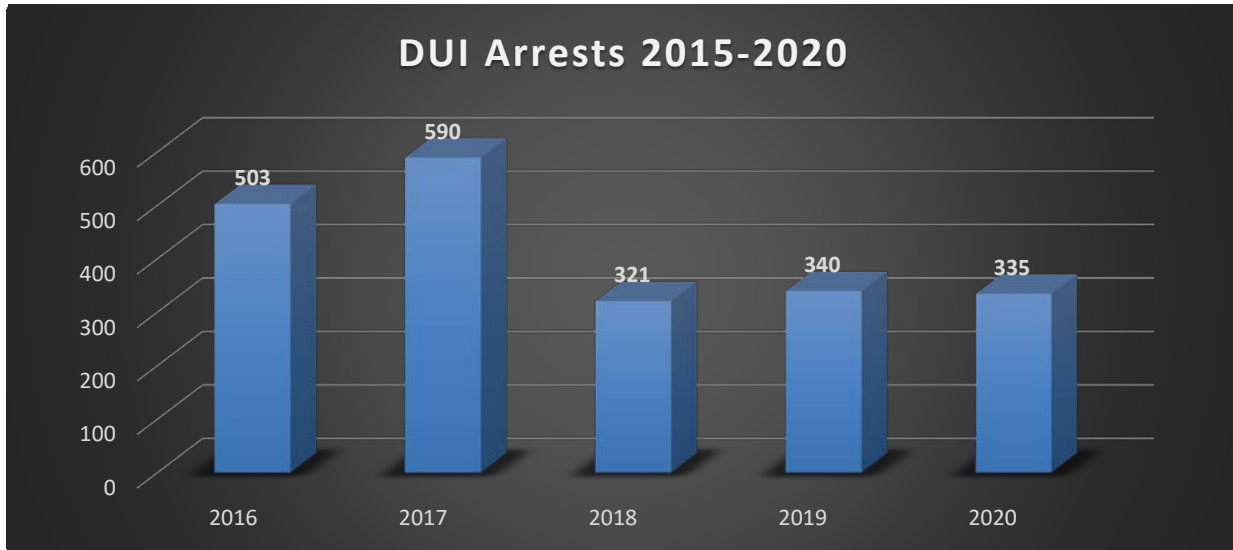
- When viewing Group C it is imperative to note that the numbers presented only represent when an officer completed a report. For example, on face value it would appear that the Bismarck Police Department responded to 174 Medical Assists (coded as Ambulance Requests). This number can be misleading to persons not familiar with the Police Department. Based on what officers on patrol normally do, officers only write reports on a fraction of the medical emergencies to which they respond.
- Another misleading figure in the Group C category would be the Loud Party classification. The report shows 5 reports, but officers actually responded to and handled 868 complaints of loud parties.
- When viewing Group C Alarm calls it shows that the Police Department had 2 Alarm call reports. If a report is made on an alarm call, the call is recoded as the reported offense (i.e. Burglary, Vandalism ...). The Police Department responded to 1,223 alarms.
- Again with respect to the viewing of Group C it would appear that officers handled 235 Domestic Disputes. Here it is important to understand that if an arrest is made at a domestic dispute the report is recoded by the Records Section to reflect the charge levied against the person arrested. In actuality, officers dealt with 2,036 separate incidents with domestic relationship involved compared to 1,819 calls in 2019. This is tracked by the addition of a code to the record that indicates there is a domestic relationship between the main parties of the report, regardless of what type of incident is being reported.
- As stated previously, out of an abundance of caution due to COVID 19 pandemic there were several months in 2020 with little or no officer self-initiated activity. This affected almost all areas of enforcement and law enforcement contacts, crime detection, charges, arrests, citations etc. The year 2020 will be difficult to make accurate comparisons to previous and future years because of this.



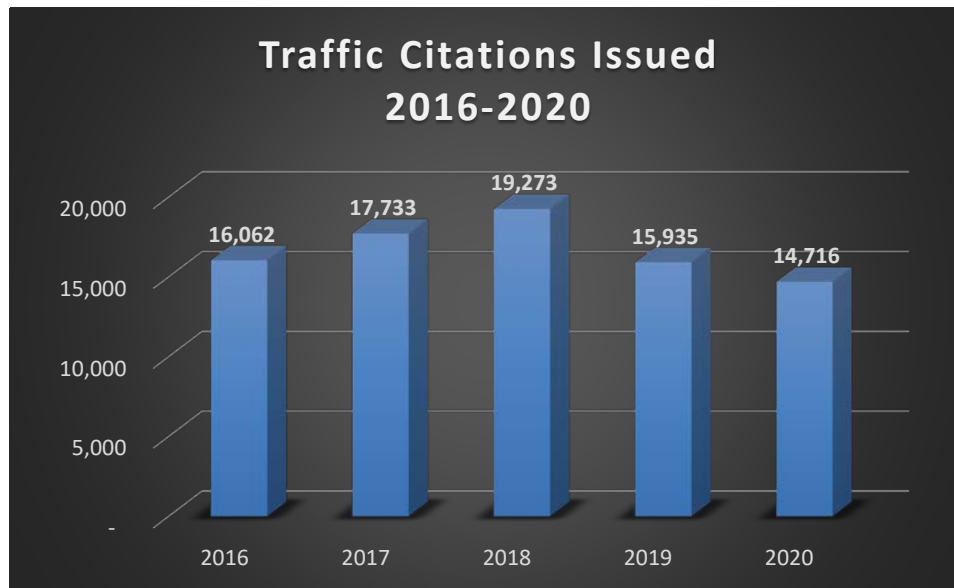
TRAFFIC ANALYSIS



The number of parking tickets increased 265 or 4% in 2020 from 2019.

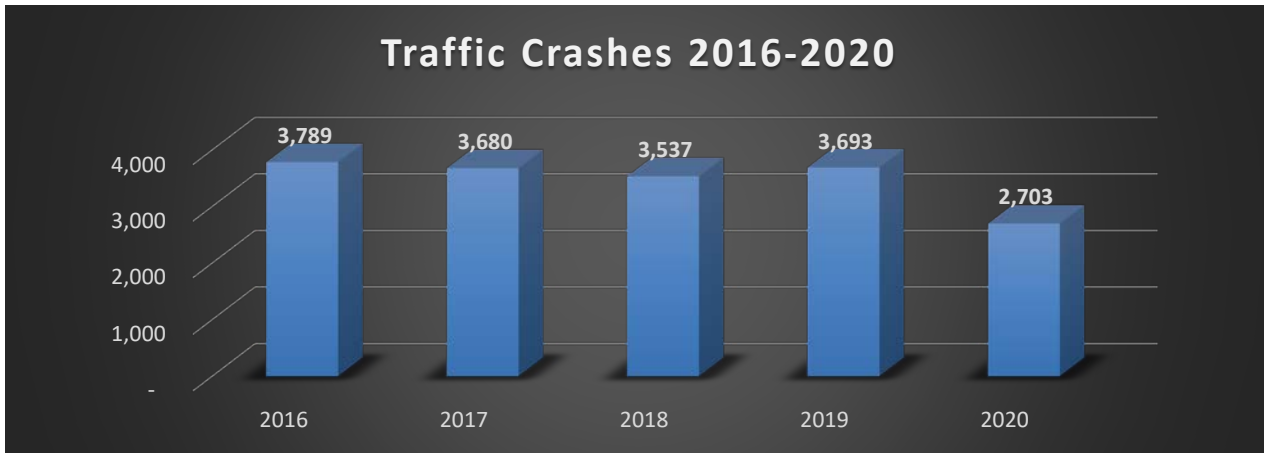


There were 335 individuals arrested for DUI in 2020 compared to 340 in 2019. 70.15% of those arrested were male and 28.95% were female. The average Blood Alcohol Content (BAC) for those who were tested was **0.18%** by weight. By law, it is illegal to operate a vehicle with a BAC of eight one-hundredths (.08%) of one percent by weight or higher for adults.

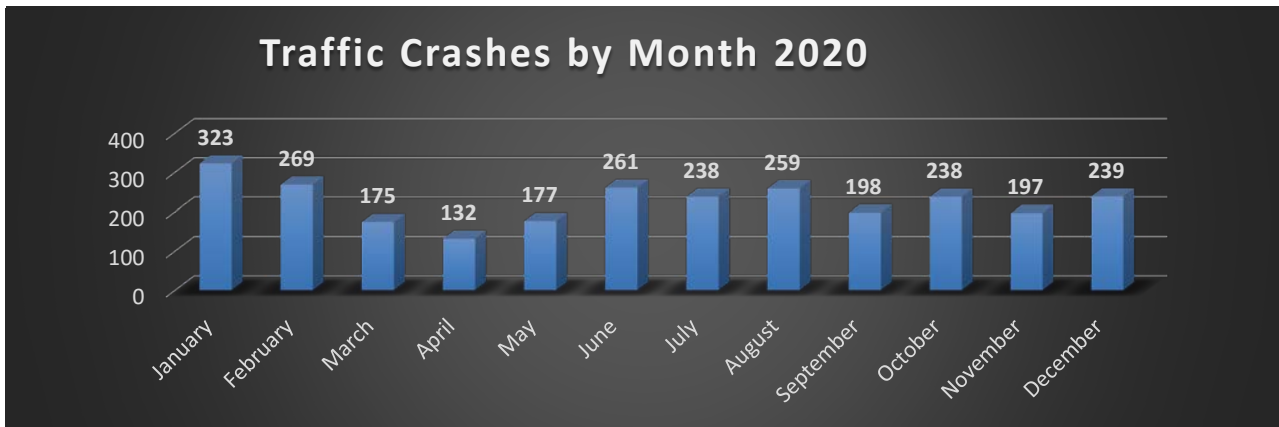


The total of Traffic Citations showed a decrease of 7.65% or 1,219 citations issued. The information below shows the traffic offenses with more than 100 citations issued for the year. The ordinance title list remained the same with some slight positional changes, but these violations seem to remain consistently high every year.

<u>Citation Offense</u>	2019	2020	<u>Difference</u>
Speed Limitations	3,246	3,516	8.32%
No Liability Insurance (Mun Ct)	2,039	1,772	-13.09%
DUS/DUR	1,660	1,511	-8.98%
Violation of Registration Provision	1,429	1,127	-21.13%
Care Required	767	553	-27.90%
Stop Signs & Yield Signs	912	904	-0.88%
Safety Belts Required	452	391	-13.50%
DUI/APC	340	335	-1.47%
Traffic Control Signal Legend	525	453	-13.71%
Equipment of Motor Vehicles	562	646	14.95%
Limitations on Backing	348	187	-46.26%
No Drivers License	596	442	-25.84%
Following too Closely	352	237	-32.67%
Turning Movement & Required Signal	218	203	-6.88%
Restricted License	436	363	-16.74%
Visible License Plate	192	264	37.50%
Obedience to Traffic Control Device	103	49	-52.43%
Required Position & Method of Turn	198	127	-35.86%



Type of Crash	2016	2017	2018	2019	2020	% Change 2017-2018
Animal Report	0	0	0	0	0	*NC
Non-Reportable	28	10	8	13	18	38.46%
Non-Traffic	1,270	1,139	1,171	1,218	1,831	50.33%
Traffic	2,491	2,531	2,358	2,462	857	-65.19%
Totals	3,789	3,680	3,537	3,693	2,706	-26.73%



There was a decrease of 26.73% or 987 for crashes in 2020 from 2019. Weather plays a significant role in the number of crashes and a bad day can easily raise the numbers from an average of 8-10 per day to 40-50 per day. For the year, Bismarck averaged 7.41 crashes per day which was a decrease from 2019's average of 10.12 crashes per day.

Crash Outcomes	2019	2020
Fatalities	1	2
Injuries	474	402
Damage Amount	\$10,946,400	\$7,700,000

As a result of the crashes in 2020, there were 2 fatalities which was one more than in 2019. There were also 402 persons injured which is a decrease from 474 persons injured in 2019. The injuries ranged from a minor cut or abrasion to permanent disfigurement/disability. The estimated property damage as a result of these 2020 crashes was \$7,700,000 which is a decrease of \$3,246,400 from \$10,945,400 in 2019.